



### How to get here

From Stromness: When departing the ferry in Stromness: Turn right upon departure from the ferry parking lot onto the A965 taking you towards Kirkwall. Turn right at A964 signposted to Orphir. Continue for approximately 7 miles (11 kms) past Houton ferry terminal and Westrow Lodge is further on the road to the left with a signpost.

From Kirkwall: When departing the ferry in Kirkwall: Turn left upon departure from the ferry parking lot and head through industrial park (taking you towards Kirkwall) to junction, take left and then 1st turn right at Mills Filling Station and follow road to traffic circle, take right at traffic circle. Take another right at the A964 Orphir road and stay on for about 20 minutes passing through small village of Orphir. Westrow Lodge is just about 2 miles further on the road from village on the right.

From St. Margaret's Hope: When departing the ferry from St Margaret's Hope follow signs to Kirkwall. You will pass Highland Park Distillery on the right when entering Kirkwall, follow the road around and then take left at the A964 Orphir road (signposted) and stay on for about 20 minutes passing through small village of Orphir. Westrow Lodge is just about 2 miles further on the road from village on the right.



### What is there to see and do?

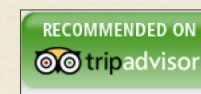
The most common complaint we get from visitors is that there just isn't enough time to see everything in Orkney! We suggest before you visit that you log on to the local tourist information site:

**www: visitorkney.com** that is just chock full of information on what to see and do in Orkney. Alternatively you can phone the VisitOrkney tourist information centre in Orkney, phone: 01856 872856, for a full colour brochure for information on things to see and do, travel, where to stay, where to dine, and where to buy things made in Orkney.

Westrow Lodge is in a quiet spot with a countryside/ beach feel, yet it is only a short drive from the two major towns of Stromness and Kirkwall and the major tourism attractions of Skara Brae and Maes Howe—a big bonus for those looking for the best of both worlds during their holiday stay.

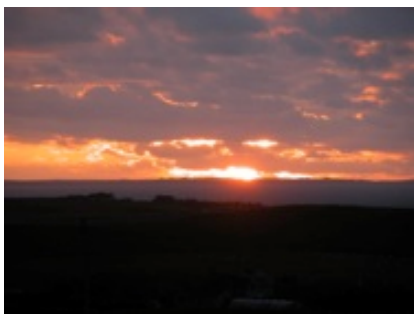
## WESTROW LODGE

Luxury Bed and Breakfast



Kathy Bichan  
Westrow Lodge, Orphir,  
Orkney, Scotland, KW17 2RD  
Tel: 01856 811360  
email: [k2bichan@aol.com](mailto:k2bichan@aol.com)  
[www.rovingeye.co.uk](http://www.rovingeye.co.uk)

Keith Bichan Jul 3, '12, 10:27 AM



This attractive modern, purpose-built, Norwegian-style timber house is peacefully situated beside the A964, half-way between Kirkwall and Stromness, and enjoys glorious views over Scapa Flow and the surrounding countryside.

There are two spacious en-suite bedrooms on the first floor, both of which are comfortably furnished in pine to match the style of the house.

One bedroom is ensuite with a superking bed and has an adjoining small room with twin beds. Roomy bathroom with shower over bathtub. Television with Freeview, ironing board with iron, and trouser press are all in the room. Perfect for a small family that wants some privacy too!

The other bedroom is ensuite with a superking bed and an additional double bed. Roomy bathroom with shower over bathtub. Television with Freeview, ironing board with iron are all in the room. Laundry done for a minimal charge.

Additional cots, high chairs, booster seats etc. are available at no charge on advance request.

Guests have their own sitting room with small refrigerator and tea/coffee facilities. There is also a dedicated desk in the guest lounge with large screen apple computer and free Wifi access. Local information on hand.

Full traditional breakfast served or can cook to order. Local pub is within walking distance for evening meals.

*Treat yourself to one of the best!*

## TripAdvisor Latest Reviews

### “Wonderful welcome”

Reviewed 6 September 2013

We ended up here by accident - we had booked in another Orkney B&B who had to find us alternative accommodation because their previous guest was ill and couldn't leave in time for us to take the room we'd booked. Kathy was lovely and welcoming and the house was a wonderful base for exploring the islands. Breakfast was fantastic with lots of lovely local fruit, and Kathy had lots of information and good suggestions for things to do in Orkney.

As an aside - my boyfriend really appreciated the California King bed - this is the first place in 4 weeks of traveling where his feet haven't stuck off the end of the bed!“

### “Amazing stay in Orkney”

Reviewed 2 September 2013

Our stay last week at Westrow Lodge was wonderful! We had a lovely spacious bedroom and bathroom, and there is a lounge just for guests which contains a computer, a small fridge and lots of reading material on the islands. Kathy is warm and welcoming host and the location of Westrow is perfect for visiting the outstanding neolithic sites in the area. I will stay here again if I ever get a chance to get back to Orkney!

### “Good is in the details”

Reviewed 27 August 2013

Set out in the countryside, you have an amazing sense of the Northern Sky. The Lodge is about half way between Stromness and Kirkwall, (about 20 minutes in either direction) making it an ideal jumping off point for exploring neolithic Orkney. Not that either town could be considered bustling, but this was truly in a peaceful spot in the midst of farmland. The house feels very Scottish and Scandinavian at the same time.

Kathy is a truly hospitable hostess, and has worked out all the little details from local soaps (I noted she'd even chosen a masculine fragrance for mine) to a communal sitting room with coffee and tea, a refrigerator and a Mac in a size to last after. The beds are super comfortable and the windows are double paned so it is easy to sleep. The bathrooms have a large tub, and mine had a candle in it making for a blissful bath. There is even satellite TV. The breakfasts are huge and Kathy seemed eager to help sort out my travel destinations--and there are extraordinary things to see within a few minutes drive.

## Tariffs

£35 per person per night based on two people sharing a room. Half price for children under 12. No smoking, no pets please.

## The Accommodation



*Views of Scapa Flow from spacious guest lounge adjacent to bedrooms*



*Full cooked breakfast in picturesque owner's lounge*



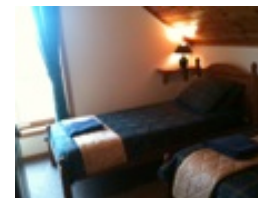
*Super King size bed*



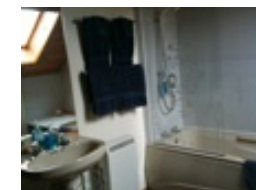
*Additional double bed in same room.*



*Super King size bed*



*Adjoining small twin room.*



*Roomy modern bathrooms with shower over tub*



Certificate of Excellence  
2013 WINNER

